

BUILDING DESIGN & CONSTRUCTION SYSTEMS MINI-MOCK EXAM QUESTIONS

1. Which of the following is NOT true regarding bentonite waterproofing?

- A. It is made with volcanic clays
- B. It swells to a watertight barrier
- C. It can be installed on top of a mudslab in a crawl space
- D. It can be installed in a hydrostatic condition

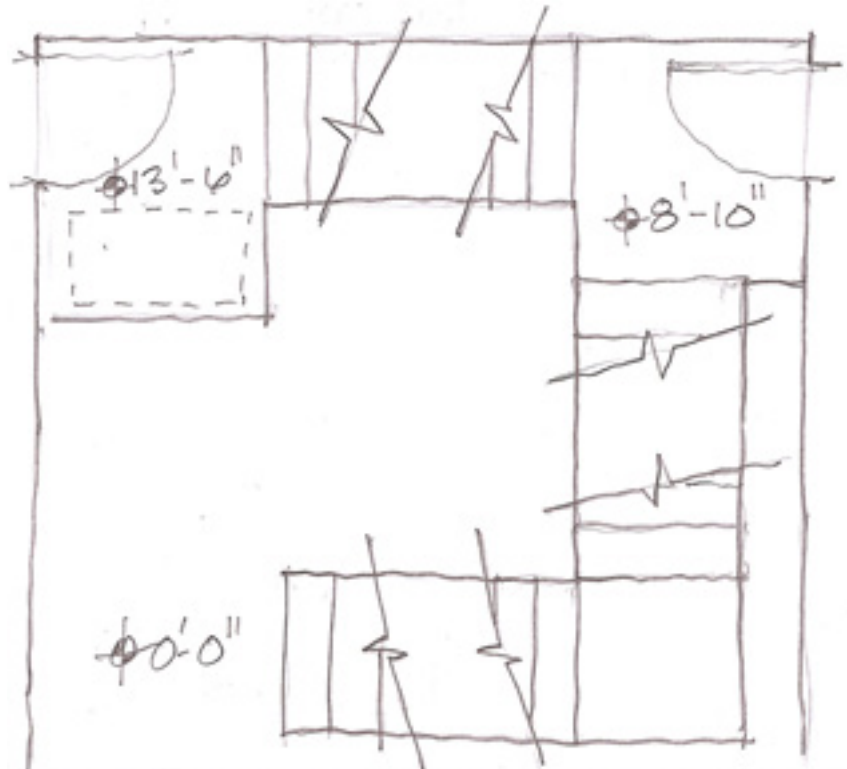
2. What is the nominal dimension of a CMU block? _____ x _____ x _____

3. What is the nominal dimension of an 8' 2x6? _____ x _____ x _____

4. You are estimating how many bricks you will need to order for a 48" wide, 2 wythe wall that is 32" tall wall for a part of a patio design. The bricks are normal, standard bricks. How many do you need?

- A. 72
- B. 144
- C. a square of bricks
- D. 768

5. How many risers are there in the sketch of the library stair:



- A. 24R
- B. 23R
- C. 22R
- D. 25R

6. What is the steel thickness range for light gauge cold rolled metal framing?

- A. 30 gauge to 8 gauge
- B. 20 gauge to 25 gauge.
- C. 8 gauge to 1/8 inch
- D. 12 gauge to 1/8 inch

7. Pozzolans are added to concrete mix for _____.

Superplasticizers are added to concrete mix for _____.

8. How many board feet is there in a 2 x 6 joist measuring 12 feet long?

- A. 18 board feet
- B. 12 board feet
- C. 24 board feet
- D. 20 board feet

9. Which of the following cuts from the same log would produce flooring with the best wearing characteristics?

- A. Quarter sawn
- B. Plain sawn
- C. Rotary sawn
- D. Half round sawn

10. Increasing the carbon content in steel has what effect?

- A. Makes steel more flexible.
- B. Makes steel less ductile.
- C. Makes steel more corrosion resistant.
- D. Makes steel easier to weld.

11. Which of the following is MOST characteristic of an end-bearing foundation element?

- A. Timber piling
- B. Belled Caisson
- C. Steel micropile
- D. Tapered precast concrete pile

12. Standing at the jobsite watching the concrete coming out of the truck, I am worried about the concrete being too runny or wet, which test should I consider?

- A. Vane Shear Test
- B. Cylinder Test
- C. Slump Test
- D. ACT Test